



Eastern Switzerland University of Applied Sciences (OST)

Presentation of School and Country

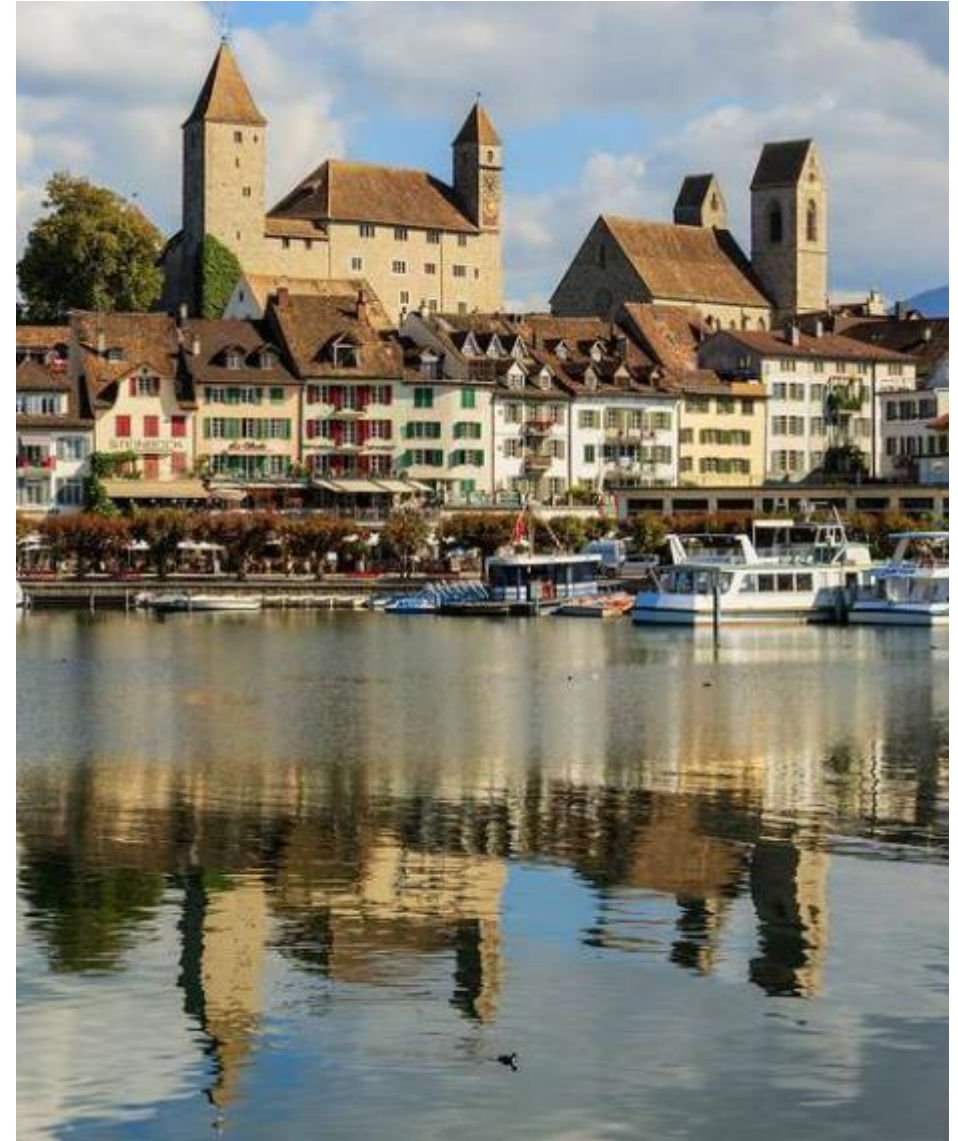
Prof. Isabelle Zulauf-Poli
Head International Relations OST
isabelle.zulauf@ost.ch



Switzerland

Who we are

Safety
Pragmatism
Performance
Perfection
Organisation
Work
Excellence
Quality
Punctuality
Reliability
Correctness
Harmony
Consensus



Who we are

Switzerland



Who we are

Switzerland – Facts & Figures



8.6 million inhabitants (2019)

- Switzerland has four national languages: German (65%), French (18%), Italian (12%), Romansh (1%), other (4%). English is widely spoken and used as a language of business, higher education and research
- Not part of the European Union (EU)
- Member of the Schengen Association Agreement since 2008
→ free movement of people, goods, capital and services
- Direct Democracy
- High quality of life and good infrastructure (public transportation)
- Temperate climate, diverse landscapes

Who we are

Switzerland – Global Innovation Index 2020

Country/Economy	Overall GII rank
Switzerland	1
Sweden	2
United States of America	3
United Kingdom	4
Netherlands	5
Denmark	6
Finland	7
Singapore	8
Germany	9
Republic of Korea	10
Hong Kong, China	11
France	12
Israel	13
China	14
Ireland	15
Japan	16
Canada	17
Luxembourg	18
Austria	19
Norway	20

Switzerland ranks first among the 131 economies featured in the Global Innovation Index 2020

Source: Global Innovation Index Database, Cornell, INSEAD, and WIPO, 2020



#1 IN
KNOWLEDGE
CREATION

Who we are

Switzerland – Global Competitiveness Index 4.0 (2019)

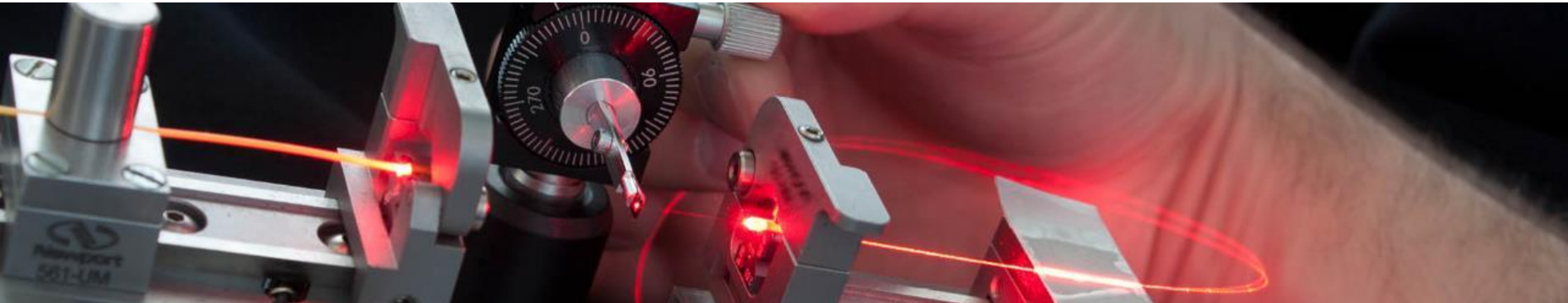
▲ Rank / 141	Country / Economy	Value (0–100)
1	Singapore	84.8
2	United States	83.7
3	Hong Kong SAR	83.1
4	Netherlands	82.4
5	Switzerland	82.3
6	Japan	82.3
7	Germany	81.8
8	Sweden	81.2
9	United Kingdom	81.2
10	Denmark	81.2

Source: *The Global Competitiveness Report 2019*, World Economic Forum

Who we are

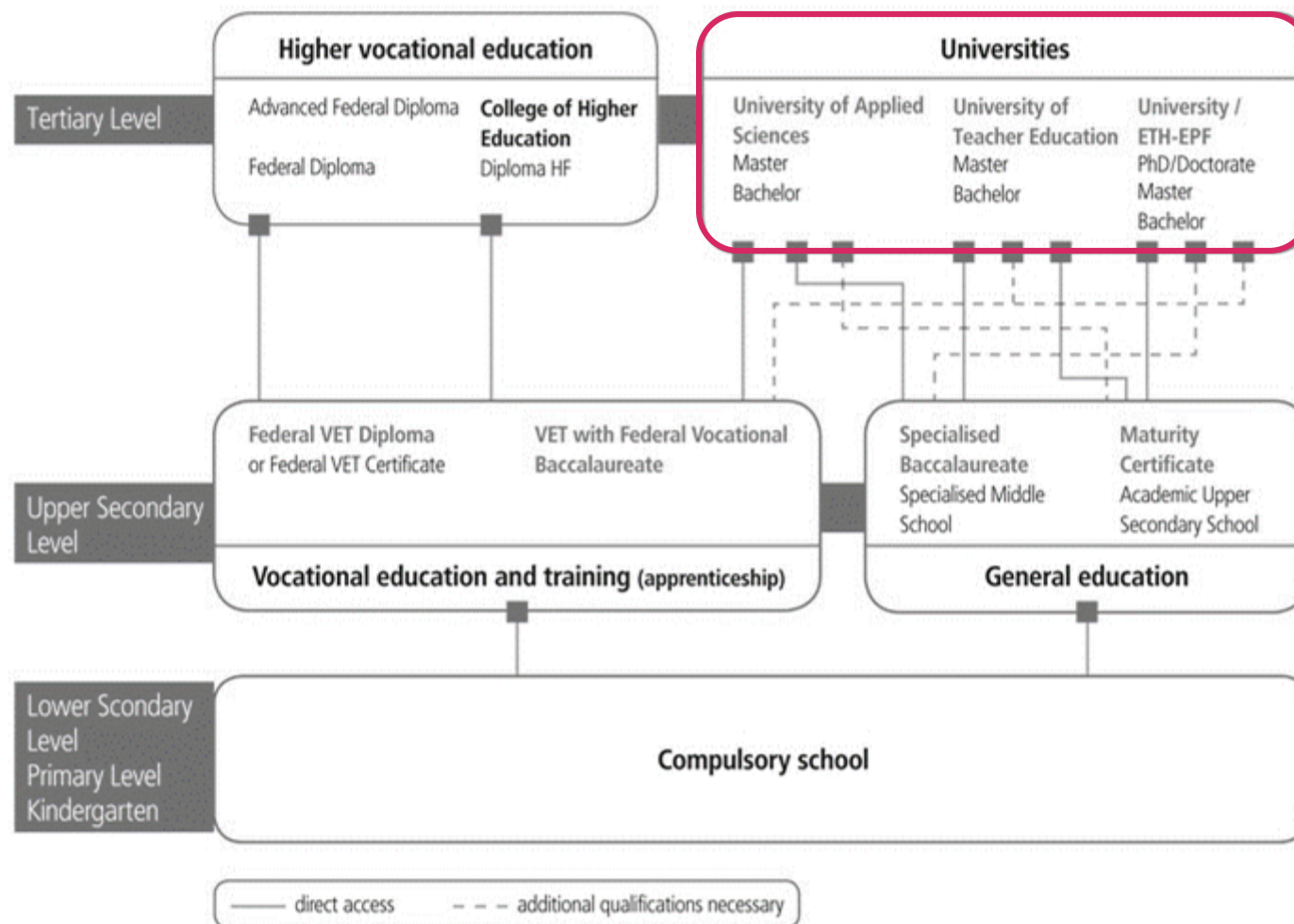
Switzerland – Factors of Economic Success

- Economy based on services (e.g. banking, insurances) & manufacturing sector (e.g. pharmaceuticals)
- Political stability, no opposition, „magic formula“
- Financial stability, strong currency
- Outstanding educational system, the so-called „dual system“



Who we are

Switzerland - Education System



Who we are

Switzerland – University Life

- Average **tuition fees** at Swiss public universities: CHF 500 – CHF 1'000 per semester
- Average **budget** of CHF 1'400 – 2'100 per month to pay for accommodation, food, transportation, supplies and leisure activities
- When studying at any Swiss university: students are expected to have and defend, and if necessary, also revise their opinions – a prominent feature of a direct democracy. Lecturers will not simply tell students what to think; rather, they will expect them to develop a **problem-based** and **critical approach**. **Interactive teaching** is highly valued in Swiss faculties



Who we are

Switzerland – Things to do



Fondue



Winter Sports



Hiking / Swimming



Wine Tasting



Christmas Markets



Rhine Falls



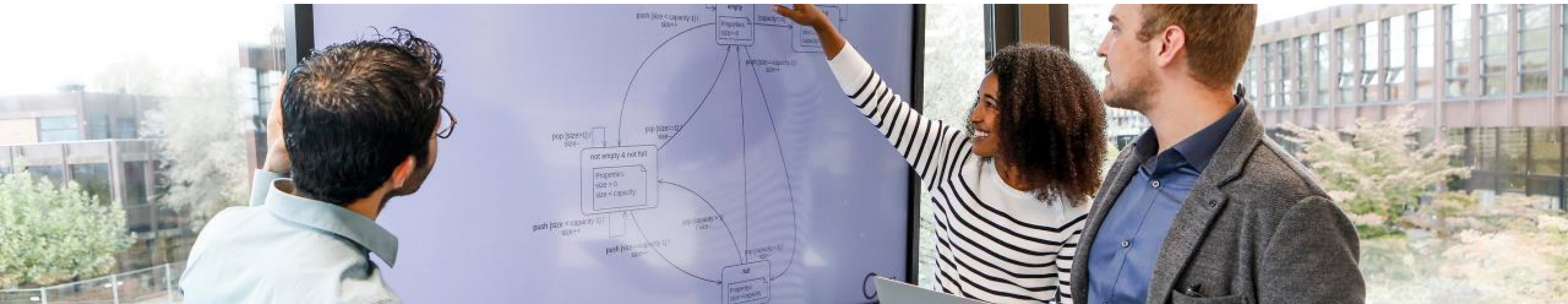
City Trips



Open Air Festivals

Eastern Switzerland University of Applied Sciences (OST)

OST is one of Switzerland's leaders in applied research and development. Attractive campuses, a diverse range of excellent degree programs in technology and social sciences, and exceptional connections to business as well as social and health institutions make it an ideal exchange destination."



Who we are

OST – Facts & Figures



Approx. **4000** students in the Bachelor and Master programs



Approx. **250** executive education courses
Approx. **1600** students in the executive education courses



Approx. **1000** lecturers and professors



practice-oriented



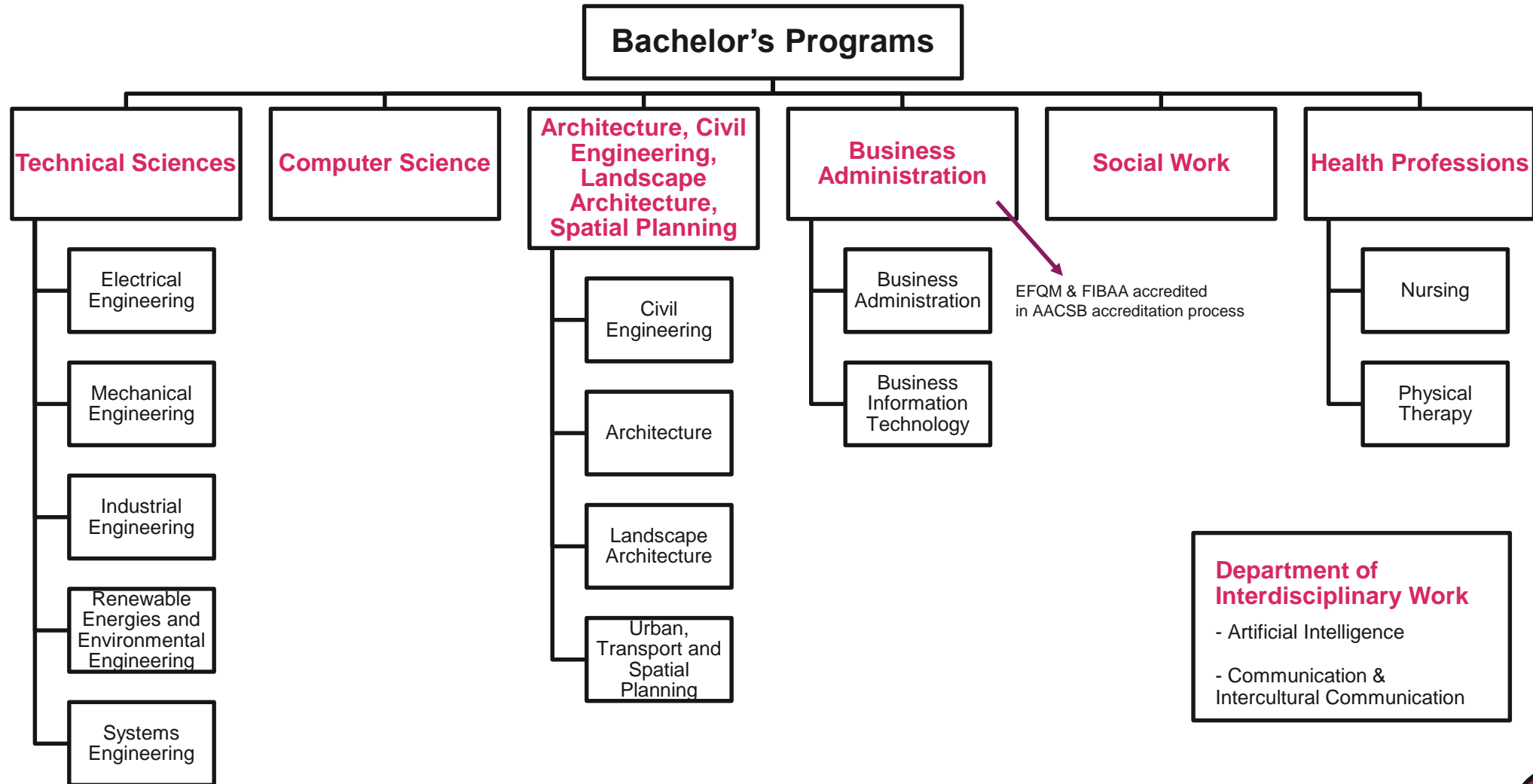
35 research institutes and centers
1000 ongoing research projects



6 Departments

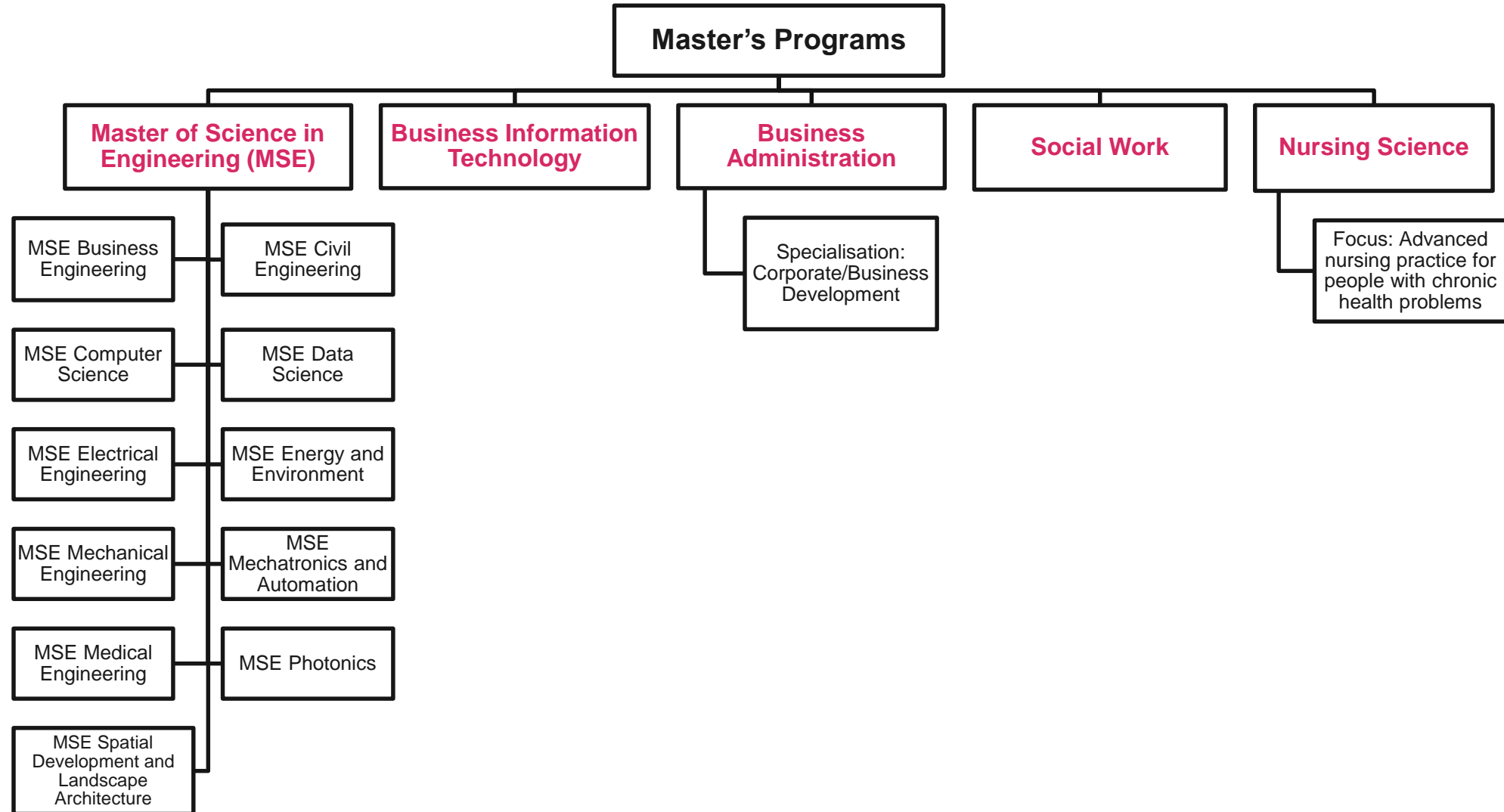


OST – Bachelor's Programs



Degree Programs

OST – Master's Programs



OST – Research Institutes

Technology	Computer Science
Institute for Communication Systems	Institute for Software
Institut für Mikroelektronik und Embedded Systems (German)	Institute for Networked Solutions (German)
Institute for Energy Technology	
Institute for Solar Technology	
Institute for Environmental and Process Engineering	
Institut für Wissen, Energie und Rohstoffe Zug (German)	
Institute for Lab Automation and Mechatronics	
Institut für Produktdesign, Entwicklung und Konstruktion (German)	
Institut für Werkstofftechnik und Kunststoffverarbeitung (German)	
Institute for the Development of Mechatronic Systems (German)	
Institute for Electronics, Sensorics and Astorics (German)	
Institute for Computational Engineering	
Institute for Energy Systems	
Institut für Ingenieurinformatik (German)	
Institute for Microtechnique and Photonics	
Institute of Innovation, Design and Engineering	
Institute of Modelling and Simulation	

OST – Research Institutes

Management	Architecture, Civil Engineering, Landscape Architecture & Spatial Planning	Social Work	Health Professions
Institute for Information and Process Management	Institute for Architecture	Institute of Social Work and Social Spaces	Institute of Applied Nursing Sciences
Institute of Quality Management and Business Administration	Institute for Civil and Environmental Engineering	Zentrum für Ethik und Nachhaltigkeit (German)	Kompetenzzentrum für Active Assisted Living (German)
Institute for Business Management	Institute for Landscape and Open Space		
Knowledge Transfer Unit	Institut for Spatial Development		

Interdisciplinary Issues
HR-Panel New Work (German)
Interdisciplinary Center for Artificial Intelligence
Institute for Ageing Research
Institut für Kommunikation und Interkulturelle Kompetenz
Zentrum für Gemeinden (German)
Institut für Gender und Diversity
Zentrum für Hochschulbildung (German)

OST – Research Award 2020



Glückliche Gesichter: Christian Bermes (links) und Pilot Florian Hauser feiern die gewonnene Goldmedaille. Bild: Alessandro Della Bella

High-tech wheelchair from Rapperswil wins gold

Great triumph at the cybathlon: The School of Engineering in Rapperswil wins gold in the competition for assistive equipment for people with physical disabilities.



OST – Selected Research Projects

Affective factors of robot acceptance in people aged over 60

The project aims to assess which affective reactions people aged 60+ have towards robots in care and service situations. The assessed emotions can be taken into account in the further development of robots for the older adults.

- Institute for Ageing Research

Photonic: Security Smart Tag Reader

The U-NICA Group is a leading provider of innovative security solutions to protect branded products and valuable documents against counterfeiting. In order to detect the multitude of security features of U-NICA as well as those generally used in the market, a prototype was created in the course of the project, which is able to recognize them and check their authenticity.

- Institute for Electronics, Sensorics and Astorics

Mobility Choices - "Nudges" for sustainable mobility

The project developed an app that allows people to indicate their preferences (e.g. less greenhouse gas emissions) and, based on these preferences, to suggest transport modes and routes. In addition, an analysis tool was developed that enables evidence-based urban and transport planning.

- Institute for Information and Process Management



Locations

OST – Campuses



Campus Buchs

«In the heart of the Rhine Valley»

School of Technology



Campus Rapperswil

«Right by Lake Zurich»

School of Technology
School of Architecture, Civil
Engineering, Landscape
Architecture, Spatial Planning
School of Computer Science
School of Management



Campus St.Gallen

«In the city center»

School of Architecture, Civil
Engineering, Landscape
Architecture, Spatial Planning
School of Technology
School of Computer Science
School of Social Work
School of Health Professions
School of Management













Who we are

OST – International Relations/International Office



Prof. Isabelle Zulauf
Director International Relations

isabelle.zulauf@ost.ch



Magdalena Schreiber
Head International Office School of Technology,
School of Computer Sciences,
School of Architecture, Civil Engineering, Landscape
Architecture, Spatial Planning
magdalena.schreiber@ost.ch
+41 58 257 44 33



Karin Pfister
Co-Head International Office
School of Management

karin.pfister@ost.ch



Dr. Esther Giger-Robinson
Co-Head International Office
School of Management

esther.gigerrobinson@ost.ch



Prof. Dr. Nadia Baghdadi
Head International Office
School of Social Work &
School of Health Professions

nadia.baghdadi@ost.ch

General inquiries: international@ost.ch

Make the mOST of it!

Study in Switzerland - Study at OST

