

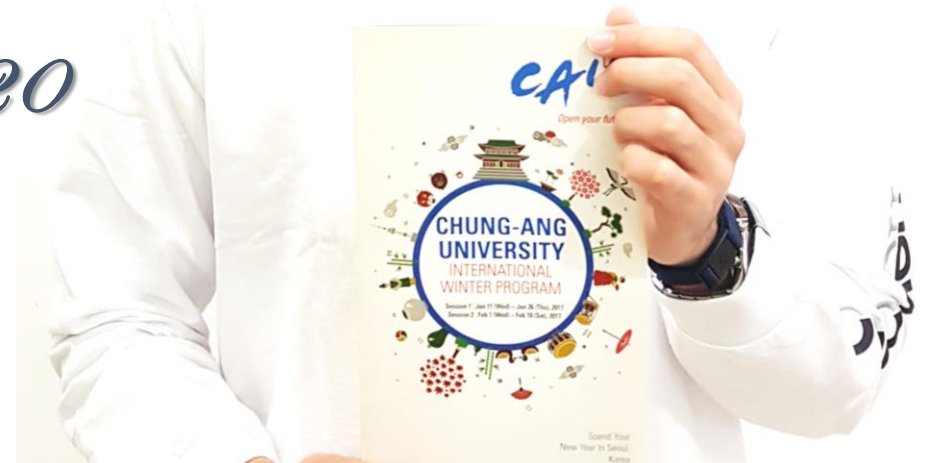


CAU

WE INVITE YOU  
TO A VERY SPECIAL  
WINTER IN SEOUL

# CAU International Winter Program

*January 13 to January 23, 2020*



The image features a white background with a central text element. At the top and bottom edges, there are decorative borders composed of overlapping, colorful geometric shapes (triangles and parallelograms) in shades of purple, orange, blue, green, pink, and red. The text "Promotional Video" is centered in the middle of the page.

# **Promotional Video**



## overview

# Chung-Ang University

중앙대학교 中央大學校

- **TOP 10 university in Korea** *Ranked as 5<sup>th</sup> for high-school students' desired university*
- **Great Location** *Two subway lines passing by; located in the heart of Seoul*
- **Center of K-wave** *No.1 in Performing Arts, Celeb-Alumni (Girl's Generation, Park Shin Hye)*
- **No.1 in Internalization** *THE Rankings in Korea 2017*



## Truly International





**Truly International**

**7<sup>th</sup> in overall ranking**  
(2017 JoongAng Ilbo University Evaluation)

**President for KAFSA (2013 ~ 2014)**

\* KAFSA – Korean Association of Foreign Students Administrators

**Host University for 2014 APAIE conference**

\*APAIE – Asian Pacific Association for International Education

**Host University for 2018 QS-APPLE conference**





## Seoul Facts

**5<sup>th</sup>** most populous city

---

Seoul Capital Area contains  
**5 UNESCO** World Heritage Sites

---

It has a large quantity of parks

---

**Most Innovative city**  
ranked 1st on the Bloomberg Innovation Index for 2015

---

**Most Educated Young Adults**  
the highest percentage (68%) of young adults who have  
some sort of tertiary education

---



# Winter in Seoul



I • SEÒUL • U

너와 나의 서울

A Perfect City for your warm Winter





# Academics

**W**ork Hard, **P**lay hard!

- **7<sup>th</sup> Greatest University in Korea** *According to the Joongang Daily*
- **5% Acceptance Rate** *Top 5% students' enrollment in CAU*
- **No.1 in academic strictness** *Don't worry! You are exceptional 😊*



## Location

**A Perfect Location to explore the city**

♥ Located in the heart of Seoul

♥ Easy access to all of the areas in Seoul

♥ Two subway stations just close to the campus

Subway Line 7

Subway Line 9

“ Chung-Ang (중앙, 中央) means **Center** in Korean ”





# Schedule

## When do I start?

January 13, Monday to January 23, Thursday



Sunday	Monday	Tuesday	Wednesday	Thursday	Friday	Saturday
12	<b>13</b> Check-in	14 Program Start!	15	16	17	18
19	20	21	22 ● Farewell	<b>23</b> Check-out	24	25

# Dates

Subjects	Date
Application Period	November 16 to December 15
Payment Deadline	December 20
Dormitory Check-in	January 13 (Mon)
Orientation Welcoming Ceremony	January 14 (Tue)
Farewell Ceremony	January 22 (Wed)
Dormitory Check-out	January 23 (Thu)

Everything is online!



# Structure

## Two-track courses

**Korean Language**  
韓國語  
(30 hours, **2** credits)

- Elementary Korean
- Intermediate Korean
- Advanced Korean



**Korean Studies**  
韓國學

(2 Lectures + Cultural Activities= credits)

- Korean Culture and Society
- Korean Beauty

*With*

- **CKEP**  
(CAU Korean Exploration Program)
  - K-Pop Dance
  - Korean Traditional Costume
  - Taekwondo
  - Calligraphy

Total **3** Credits





Ski Camp

## Activities

A variety of Cultural Excursions!



K-pop dance



Hanbok Experience

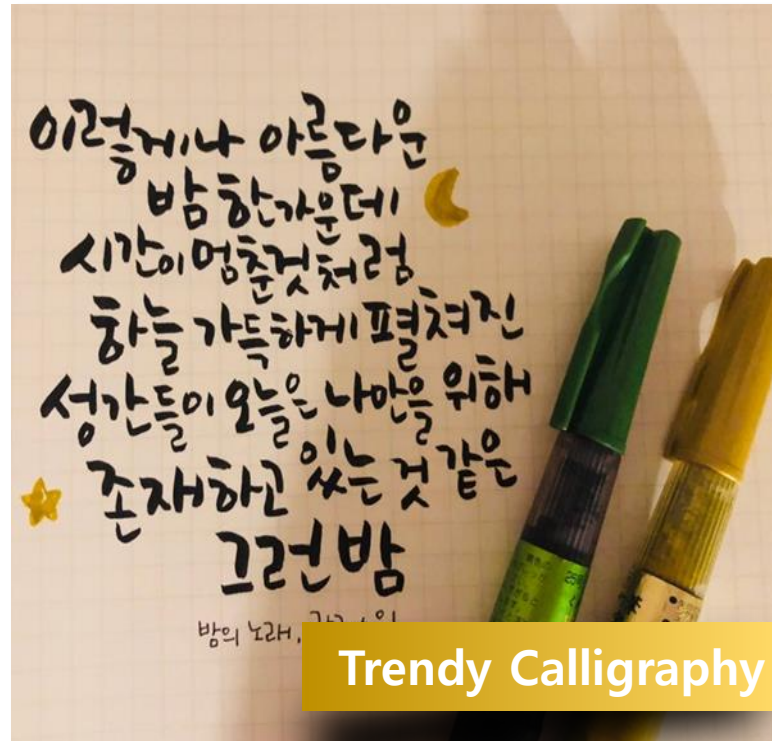


## Activities

The **largest** number of Cultural Excursions!



TKD



Trendy Calligraphy



Seoul City Tour



# CAU the Center of K-wave

Department of Theater and Film / 09 / Singer and Actress Soo-Young Choi

The time spent at Chung-Ang University was a special experience for me, as a student who started her acting career since the Junior year of High School.

As a person who debuted early and walked a different path from my peers, I will never forget the ordinary but special campus life with my friends and colleagues.

I am very grateful for the campus life at Chung-Ang, just like the other alumni who are working very hard in their fields

I am a proud graduate of my colleagues and hope to learn how to develop myself more.



Department of Theater and Film / 08 / Actress Shin-Hye Park

I still remember all of the great memories that I have made with my friends during the school years.

With the experience from Chung-Ang, I will do my best from the energy that I have received. I hope that Chung-Ang is not only place for education, but also the place for your precious memories.

I support the past 100 years, and moreover next 100 years as well.

I send my sincere congratulations for Chung-Ang University's 100th anniversary.





## Korean Music



*Traditional Music*



*All about K-pop industry*

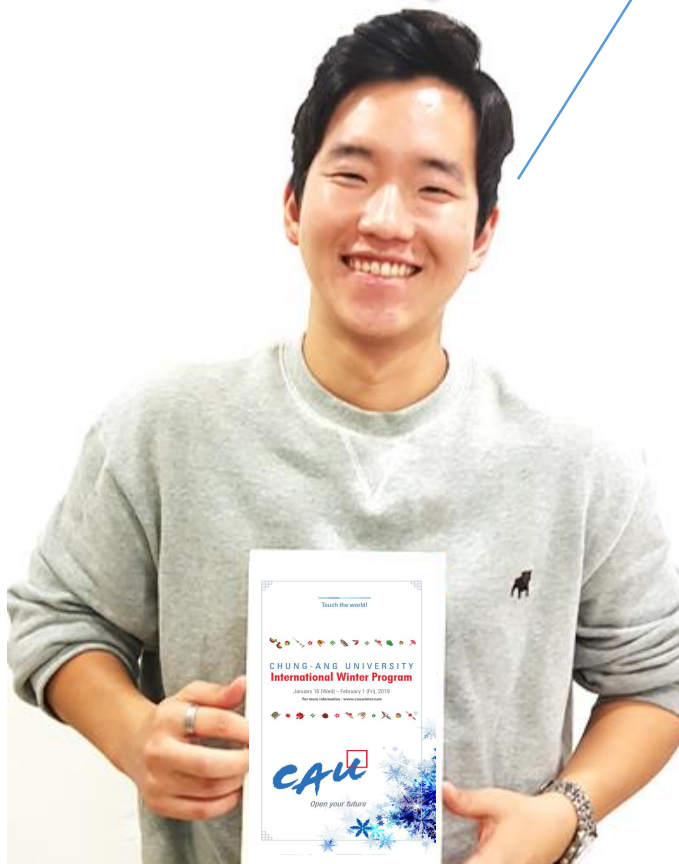
## Korean Folklore and Culture



• Traditional Korean's Life

*Korea's Traditional Culture*

Tuition **includes**  
CKEP (Field Trips) fee!



## Scholarship

**50% of tuition will be waived as a scholarship**  
for students from **CAU** Partner Universities

Subject	Non-partner		Partner	
	KRW	USD	KRW	USD
Administration Fee	60,000	60	Waiver	Waiver
Tuition	2,000,000	2,000	1,000,000	1,000
Dormitory (10 Nights 11 Days)	140,000	140	140,000	140
Airport Pickup (Optional)	40,000	40	Waiver	Waiver
Total	2,240,000	2,240	1,140,000	1,140





## Affordable, but Incredible

**A University**



**B University**

<b>Tuition (krw)</b> (for Partners)	1,300,000	<b>1,000,000</b>	1,600,000
<b>Activities</b>	3 free activities	<b>5~6 free activities</b>	No free activities (all charged)
<b>Accommodation (krw)</b>	From 300,000~	<b>Max 140,000</b>	From 552,000~



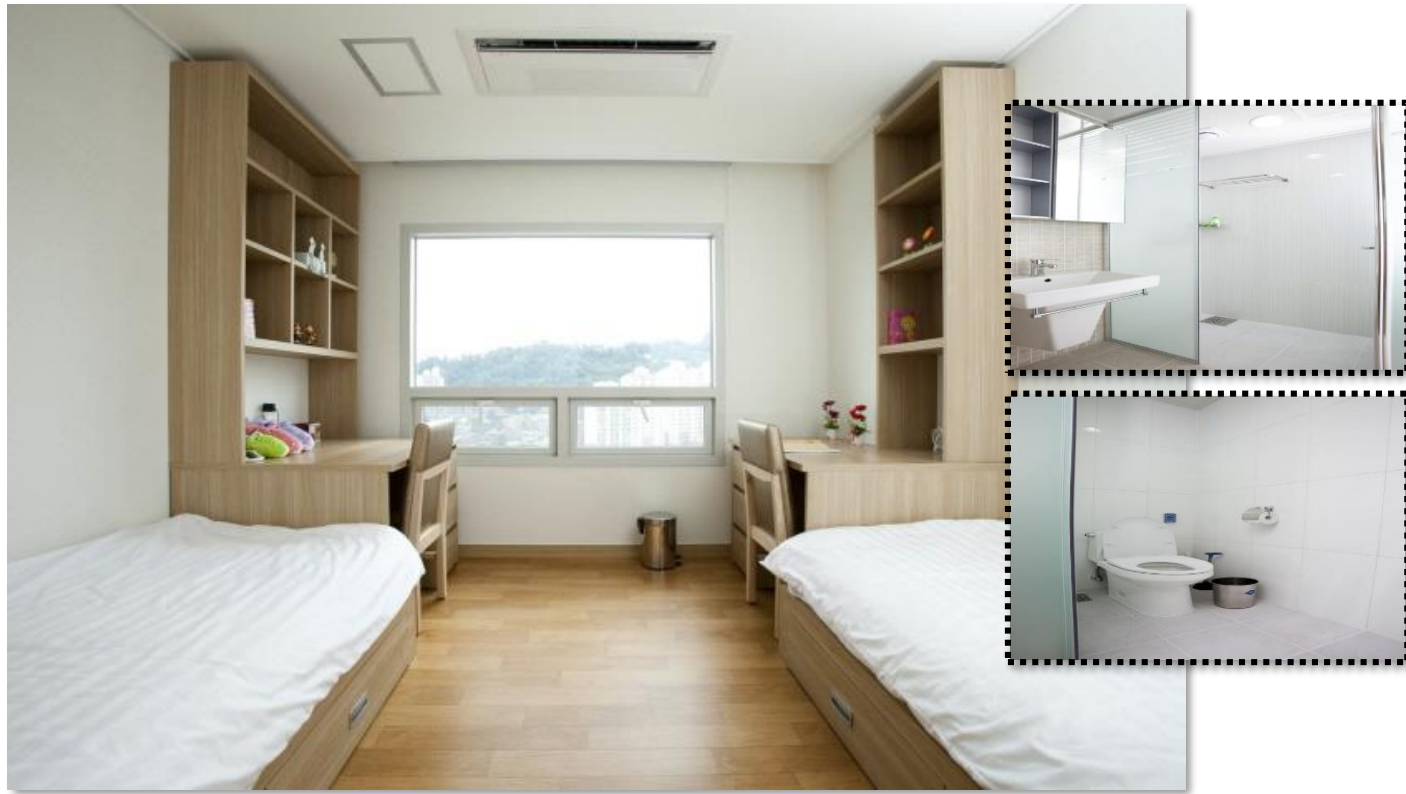
## Accommodation

On campus housing **14,000KRW** (13USD) per day! (2 beds)



## Accommodation

**On campus housing 14,000KRW (13USD) per day! (2 beds)**





## Accommodation

On campus housing **14,000KRW** (13USD) per day! (2 beds)





## Accommodation

**On campus housing 14,000KRW (13USD) per day! (2 beds)**



## Information

[http:// CAUwinter.com](http://CAUwinter.com)



Official Page

@CAU\_international



Instagram

<http://facebook.com/cauoia>



Facebook

All **MOBILE** Applicable

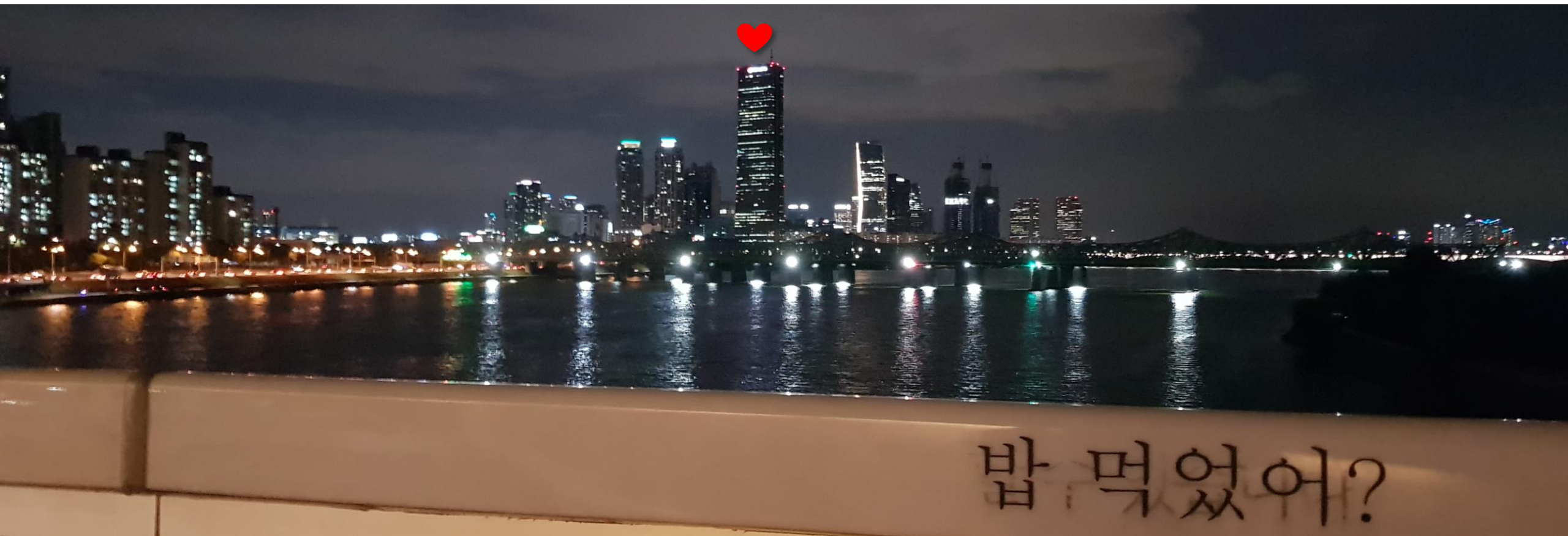




# Who's in Charge?

- [cauwinter@cau.ac.kr](mailto:cauwinter@cau.ac.kr)

**Mr. Jeff Jang**





# Global Ambassadors



**Global Ambassadors are here for you!**



# Global Ambassadors

From Airport Pick-up to **CKEPS**



**Global Ambassadors are your...**

**Staff**

**Korean Friends**

**Buddy**

**Family**

## Testimonials

“Every class was helpful for us  
to broaden our horizons.”

*Chiung-ju Tsai*  
National Cheng Kung University





## Testimonials



“ I got to experience a lot of things  
I haven't been able to do before ”

*Aisyah Salsabila*  
*Binus University*

## Testimonials

“All of this is more than I expected”

*Yee Tian Boo*  
*University of Wollongong*





# Photo



Centennial Hall



# Photo



Dragon Pond



# Photo



R&D Center



Photo



Library



# Photo



Centennial Hall (Winter)



# Photo





See you at **CAU**

***CAUwinter.com***