

*Bring **UTM** to the **WORLD**,
Bring the **WORLD** to **UTM***



PRE – DEPARTURE GUIDE FOR UTM INBOUND MOBILITY STUDENTS

Student Services & Global Education Experience

www.utm.my/international

UTM International

innovative • entrepreneurial • global

SELAMAT DATANG !

Congratulations on your offer to study at Universiti Teknologi Malaysia! We can't wait to welcome you to our ecotourism campus. We understand that studying in foreign country away from your family and friends can be an exciting and daunting experience. To support you through this time, we have created this useful guide to help you to prepare for your move to Malaysia and your first few days in Universiti Teknologi Malaysia.

UTM International
Block S19

Universiti Teknologi Malaysia
81310, Johor Bahru, Johor

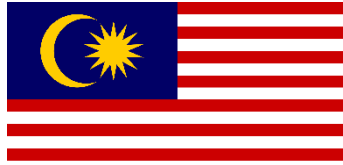
☎ : 607-5536844 | Fax: +607-5536847

✉ : globaleducation@utm.my

Content

Num	Topic	Page
1	About Malaysia	4
2	About UTM	6
3	Accommodation	10
4	Living cost in Malaysia	11
5	Checklist – Before you leave home	12
6	Travelling to the campus	13
7	Arriving at the campus	





1 About Malaysia

1

Divided into **West Malaysia** (Peninsular Malaysia) and **East Malaysia** (Sabah & Sarawak)

2

Multiracials. Among the race is Malay (majority), Chinese, Indian, Sikhs, Cina Peranakan/Baba-Nyonya, India Peranakan (Chitty), Orang Asli (Aboriginal People), Dayak, Iban, Bidayuh, Murut, Melanau, Kadazan Dusun, Penan, etc

3

With this, comes a myriad of language spoken, religions, festivals, food & customs



4

Islam is the official religion.

However, the rights of other religions are protected under The Constitution and can be practiced freely throughout Malaysia. Among other religions include Christianity, Buddhism, Hinduism, and Sikhism

5

Because of the multicultural heritage, many religious festivals are also public holidays and are celebrated nationwide regardless of race or belief.



UTM
UNIVERSITI TEKNOLOGI MALAYSIA



CURRENCY

Ringgit Malaysia
(RM)

USD 1 = RM 4.1

Preferred
payment method:
cash, debit/credit
card



LANGUAGE

Malay, Tamil,
English,
Mandarin and
other Chinese
dialects

Most
Malaysians are
multilingual



TIME ZONE

GMT+8hrs

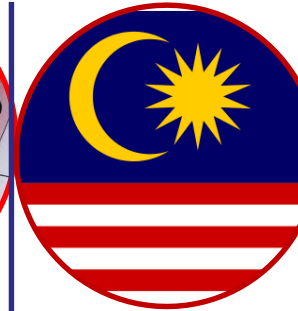


PUBLIC HOLIDAYS

2 types: national
& state levels

15 days of PH

-Among
celebrated Eid
Fitri, Eid Adha,
Thaipusam,
Chinese New
Year, Deepavali,
Christmas,
Wesak, Hari
Gawai, Tadau
Keamatan, etc



NATIONAL FLAG

known as
“Jalur
Gemilang”.



GOVERNMENT

Parliamentary
democracy

-Head of State:
Yang Dipertuan
Agong

Head of
Government: Prime
Minister

2 About UTM

Sprawling across 1,148 hectares of lush greenery in the pristine environment of Johor Bahru, the main campus of Johor Bahru is in Iskandar Malaysia region, a dynamic economic corridor at the southern tip of Peninsular Malaysia and just a causeway-apart from Singapore.

FAST FACTS & FIGURES

JB

More Commonly known

500,000

Estimated **population**

MAJOR INDUSTRIES

Tourism, electronics, petrochemical refinery, shipbuilding

TRAVELLING

30 MINUTES

Express Bus **to Singapore**

SHIP/BOAT

To Tg. Pinang & Batam, Indonesia

ISLANDS & BEACHES

Pulau Tioman, Pulau Redang, Pulau Sibul

SHOPPING & EAT

SHOPPING COMPLEX

Johor Premium Outlets, City Square, Paradigm mall, Komtar JBCC

“NASI LEMAK”

Famous local food

PLACES OF INTEREST

Legoland Malaysia, Nusajaya, JB Bazaar

UTM Historical Timeline



**Kuala Lumpur
Campus**

[1985]
Johor
Bahru
Campus
(1,145
hectare)



Universiti Teknologi Malaysia (UTM) [1975]

National Institute of Technology (ITK) – University Status [1972]

2010 – Research University

Technical College – Professional Programmes [1960]

Technical College, Jalan Gurney [1955]

Technical College – Diploma [1946]

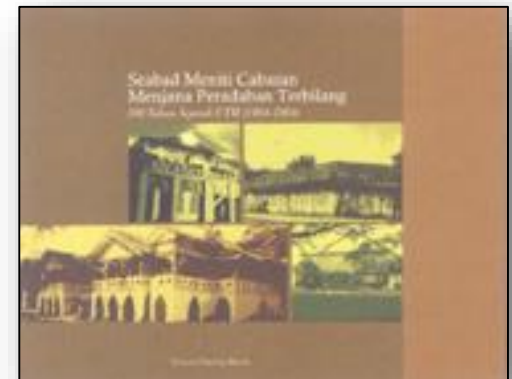


[1930] Technical School,
High Street

[1925] Technical School,
Jalan Briickfields --- JKR

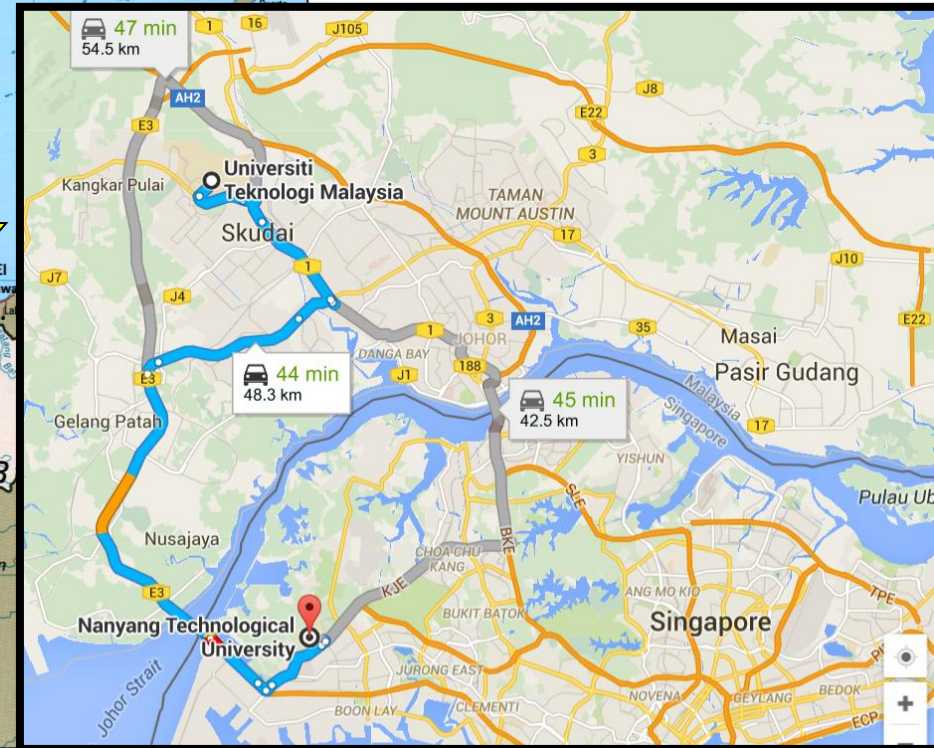
[1906] Technical School, Batu Lane
Bangunan Muzium, Bukit Nanas

[1904] Treacher Technical School, Weld Road
(Jalan Raja Chulan)





UTM Johor Bahru



1-2 hrs flight to main destinations in South East Asia

UTM Main Campus – Johor Bahru



**UTM Johor Bahru
(1145 Hectares) – main campus**

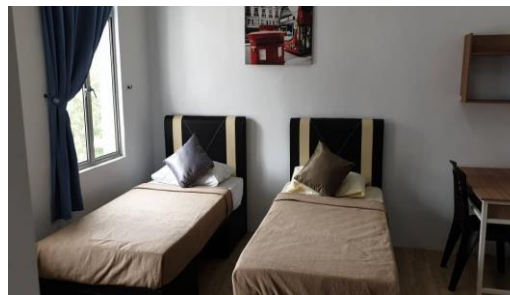
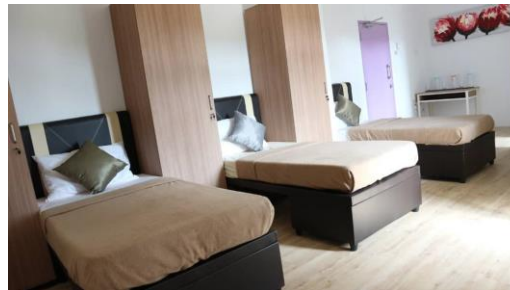


3 Accommodation

All UTM Inbound Mobility Students will be guarantee an on-campus accommodation. Students will be allocated at the Campus Residence as follow:

ROOM TYPE	PAX/ROOM	BEDDING	RATE PER PAX/MONTH
En-Suite Single	1	1 Single Bed	RM760.00
En-Suite Twin Sharing	2	2 Single Beds	RM630.00
En-Suite Triple Sharing	3	3 Single Beds	RM520.00

Single Bed
 Pillows
 Mattress
 Mirror
 Wardrobe
 Bookshelf
 Study Table & Chair
 Curtains
 Wi-Fi Access
 Fan
 Utility Table
 Air-Condition (Prepaid)



Please made a booking **before 31st July 2019.**

4 Living Cost in Malaysia

The cost of living for international students studying at UTM Johor Bahru is reasonably low compared to international standards, and can vary from USD200–USD400 a month depending on individual needs and lifestyle (assuming single, excluding accommodation and transport). UTM provide bus services within the campus.

All the necessary facilities and amenities are readily available within the campus and its vicinity for the convenience of the students. Your spending patterns may be different from depending on your preferences and lifestyle. It can be difficult to estimate how much you are likely to spend as a student until you have settled down for. As such, it is important to ensure that you have sufficient finance to support both your living expenses and tuition fees throughout the duration of studies.

Item	Cost (RM)
Street-stall food	6–12
Fast food	6–25
Restaurant	15–50
Clothing	From 30
Groceries	30–80

Item	Cost (RM)
Air ticket	Visit AirAsia or Malaysia Airlines for the latest fares.
Taxi	3.50 for first 2 km, then 0.10 per 115 metres
Bus, Light Rail Transit	MYrapid has the latest fares.
Other monthly costs	From 400



5

Checklist: Before you leave home

BEFORE YOU LEAVE HOME

Please remember when you are packing your suitcase that you will have to carry your luggage around the airports and across the city to your accommodation. Therefore, a helpful tip for you to remember is if you can't carry it, do not bring it! We also would like to recommend you do not bring more than one suitcase and one carry – on bag. You will be able to purchase most of the things that you need after arriving in Malaysia. Here is the list of items that we recommend you bring;

TICK;

- ☐ Clothes
- ☐ Toiletries for your first few days
- ☐ Medicines
- ☐ National and traditional dress for formal occasion and activities
- ☐ Carry a copy of your offer letter
- ☐ Accommodation documents
- ☐ Bring MYR currency in case there are any delays in setting up a bank account

DON'T FORGET;

A photocopy of;

- ✓ Passport Details Pages
- ✓ Entry Stamp to Malaysia (post-arrival)
- ✓ Single Entry Visa (SEV)
- ✓ Visa Approval Letter
- ✓ UTM Offer Letter

TIP;

- Keep the copy of your passport in a separate and safe place in case the document is lost or stolen. You may also leave the copy to your family and friend to be extra safe.
- Avoid bringing valuable items with you such as jewelry and keepsakes. If you are certain you would like to bring valuable items with you, make sure they are insured and always stored securely.



UTM
UNIVERSITI TEKNOLOGI MALAYSIA

6 Travelling to campus

There are several ways to get to Universiti Teknologi Malaysia (UTM), Johor Bahru



6.1 BY PLANE

The nearest airport to UTM is Sultan Ismail International Airport (also known as Senai Airport). You can take international flight to Kuala Lumpur International Airport (KLIA) and take a connecting flight to Sultan Ismail International Airport. Then please take a taxi from the airport taxi counter to UTM Johor Bahru, and the fare is approximately RM 30 to RM40. You may also request for grab services to our campus and their charge is usually cheaper than taxi services.

Another option is to take an international flight from your home country to Changi International Airport, Singapore and take an airport taxi to UTM Johor Bahru. However, you may need visa to enter Singapore.

Book your ticket online :

Flight from KLIA to Senai Airport (JHB)

www.airasia.com

www.malindoair.com

<http://www.fireflyz.com>

www.malaysiaairlines.com

Senai Airport Terminal

Tel +607 599 4500

GPS 1.6358° N, 103.6659° E



6 Travelling to campus

6.2 BY COACH

From KLIA or KLIA2 to Johor Bahru, you can take YoYo Bus which will cost you around RM60 – RM70. Kindly inform the staff in charge at the service counter and bus driver to stop at Taman Tun Aminah Bus Station. Then, you can get a taxi / uber / grab service to UTM Johor Bahru Campus.

Johor Bahru YoYo Express Bus Contact details:-

Address:

Counter 16, Terminal Bas & Teksi Taman Ungku Tun Aminah,, Jalan Perwira 16,, Taman Ungku Tun Aminah, 81300 Skudai, Johor

Phone: **+607-554 5723**

From Kuala Lumpur, its takes around 4 - 5 hours to reach Johor Bahru. After the last highway toll counter, ask the bus driver to stop at Batu Sepuluh Skudai and take a taxi / uber / grab from the place you dropped.

DOWNLOAD GRAB APPS

<https://www.grab.com/my/>



AIRPORT TAXI (SENAI)

www.senaiairport.com

Tel: +607 5991622.

Metered Taxi also available

AIRPORT TAXI (KLIA)

www.airportlimo.my

Tel : 1300 88 8989

Metered Taxi also available



6 Travelling to campus

6.3 BY TRAIN

You make sure your KTM train tickets to Johor Bahru. From Johor Bahru Train Station, you can take a taxi or bus to Taman Universiti. From Taman Universiti, it will be 5 minutes' drive from UTM. You can take a taxi in front of Jusco Taman Universiti to UTM.

KTM Malaysia Booking & Schedule Online:

http://www.ktmb.com.my/ktmb_ui

6.4 CHECK YOUR DATE/DAY OF ARRIVAL AT UTM

➤ Arriving On Weekdays:

Sunday – Wednesday: 8.00 am – 5.00pm

Thursday : 8.00 am – 3.00pm

- Go to the security post at UTM main entrance and ask for direction to UTM International office.

➤ Arriving On:

Friday / Saturday / Public Holiday / After Office Hour:

- You may contact International Student Society members and get more information about accommodation.
- Find accommodation nearby UTM Campus.



UTM
UNIVERSITI TEKNOLOGI MALAYSIA

6 Travelling to campus

6.4 HOTELS NEAR UTM

Scholar`s Inn

Block U9, Kolej Perdana, UTM,
Johor Bahru, Johor 81310 Malaysia
Tel : 07-5535197

Rose Cottage Hotel

No. 76 & 78, Jalan Kebudayaan 1, Taman Universiti,
81300 Johor, Malaysia
Tel : 07-5211366
(Ms. Junaidah binti Ani)

U Hotel

34, 34-01, Jalan Kebudayaan 5, Taman Universiti,
81300, Skudai, Malaysia
Tel : 012-7542543/ 07-5203688
(Ms. June)

The Uni Garden Hotel

No. 112, Jalan Pendidikan 6, Taman Universiti,
81300 Skudai, Johor, Malaysia
Tel : 07-52

Apollo Hotel

No. 30 & 32, Jalan Kebudayaan 5, Taman Universiti,
81300 Skudai, Johor, Malaysia
Tel : 07-5206888/ 07-5201888

Q Hotel

No. 17, Kebudayaan 2, Taman Universiti,
81300 Skudai, Johor
Tel : 07-5217969
Website : www.qhotel.com.my

Maple Hotel

Tel : 016-7527753
(Mr. Ting)



Arriving at the campus

7.1 RECEPTION AT UTM INTERNATIONAL, BLOCK S19, UTM JOHOR BAHRU

1. Register for accommodation
2. Proceed for medical check up at UTM Clinic Centre
3. Fees payment at Bursar office (will be assisted by officer in charge)
4. Get your student card
5. Register yourself at the respective faculty

IMPORTANT NOTES

All payments for your tuition fees should be made prior to your registration date.

UTM INTERNATIONAL CONTACT



www.utm.my/international



- UTM International
- UTM Mobility Programme



@UTM International



@utm_i



gloaleducation@utm.my
+607-5536844

Thank You & See You in Malaysia!

Prepared by:-

Ms. Fasihah Jaslan

Manager (Mobility)

Student Services & Global Education Experience

UTM International