

Information for Exchange Program for **Fall 2023** Shizuoka University, Japan

Country	Japan
University	Shizuoka University (National University Corporation)
Campuses	Shizuoka Campus (Shizuoka-City) or Hamamatsu Campus (Hamamatsu-City)
Homepage URL	https://www.shizuoka.ac.jp/english/ https://www.suoic.shizuoka.ac.jp/english/international/exchange-student/

Program Name	International Exchange Program
Qualification	<u><i>A reasonable command of Japanese and/or English.</i></u> <u><i>(However, if you'd like to take a class/classes of your major, please be sure to</i></u> <u><i>Check column 'Academic studies' carefully.)</i></u>
Academic Levels	<ul style="list-style-type: none"> • Undergraduate levels • Graduate (Master Course) levels
Faculties	<p><u>Undergraduate level</u></p> <p>We have six faculties of Humanities and Social Sciences, Education, Agriculture, Science, Engineering, and Informatics. (And Faculty of Global Interdisciplinary Science and Innovation, Open in April 2023)</p> <p><i>Shizuoka University will decide the faculty for successful applicant based on his/her major and study plan, Japanese proficiency and the capacity of faculties and so on. We don't accept any request for the change of faculty or campus.</i></p> <p><u>Graduate (Master Course) level,</u></p> <p>We have three Graduate Schools of Humanities and Social Sciences, Education and Integrated Science and Technology.</p>
Terms	<p><u>Spring term : April 1st ~ September 30th</u></p> <p><u>Fall term : October 1st ~ March 31st</u></p> <p>*Applicants can choose either one term (6 months) or two terms (1 year).</p>
Japanese Language Studies	<p>SUOIC provides Japanese language and culture classes for the international students from the beginner's level to the advanced level.</p> <p>The study plan will be confirmed after consulting with his/her faculty advisor and academic advisor.</p> <p>Please refer to the information of Japanese Language Studies including some culture classes, on the following website:</p> <p>https://www.suoic.shizuoka.ac.jp/english/international/program/</p> <p>SUOIC also provides various activities such as exchange activities with the local people, home stay programs and get-togethers with Japanese students in order to support international students in adjusting smoothly to Japanese society.</p>
Academic Studies	<p><u>At the undergraduate level:</u></p> <p><i>Most classes are given in Japanese.</i> If an applicant would like to study his/her major and to take these classes, the high command of Japanese must be</p>

	<p>required. (We have some classes in English as General Education. However, these aren't specialized subjects, it's very likely that these will not be approved as credit transfer to the exchange student's home university.)</p> <p><u>At the graduate (Master Course) level,</u></p> <p>The details will be offered at the orientation at the beginning of each term. (There are a few introductory courses given in English.)</p> <p><u><i>Some courses in Agriculture, Science, Engineering and Informatics may be offered in English.</i></u></p> <p><u><i>All the courses in the Humanities and Social Sciences and the Education are given in Japanese.</i></u></p>
Obligation	All exchange students are under obligation to take classes for more than 7 classes (10 hours) per week.
Application	<p><u>Application documents must reach us by March 10, 2023</u></p> <p><u>Accepted only through the applicant's University Office.</u></p>
Contact	<p>Natsumi YAMADA (Ms.)</p> <p>International Student Exchange Unit International Affairs Section, Shizuoka Univ. 836 Ohya, Suruga-ku, Shizuoka-shi, 422-8529, Japan</p>
Transcripts	Official transcripts are available upon students' request.
School Fees	Tuition is waived.
Living Cost	<p><u><i>The monthly cost of living: Approx. 80,000JPY (Residence cost included)</i></u></p> <p><u><i>Note: You need to guarantee the above amount on Certificate of Deposit Balance issued by bank. (Please make sure this when submitting the certificate.)</i></u></p>
Scholarships	There is no information of available scholarship currently.
Accommodation	<p>Shizuoka University offers the International Residence, Dormitories and Institutional Guarantee for renting apartment & Comprehensive Renter's Insurance. Most exchange students stay in the International Residence, and they are given priority to move into there, but we cannot guarantee a room to all exchange students due to space limitations. International Residence application forms will be sent after the notification of acceptance of exchange program. Please see details about the information of the housing below.</p> <p>https://www.suoic.shizuoka.ac.jp/english/international/dwelling/</p>
Medical Coverage / Insurances	<p>Please check the website below.</p> <p>https://www.suoic.shizuoka.ac.jp/english/international/medical-insurance/.</p>
Notice	<p>* Applicants who have only Japanese citizenship are not eligible to apply.</p> <p>* An applicant who will graduate from home university during the exchange program will not be accepted.</p> <p><u><i>*An applicant who is in graduate school and would like to study his/ her study field should indicate a specific research plan and submit the below documents to us:</i></u></p> <p>— <u><i>Research proposal</i></u></p> <p>— <u><i>Desired supervisor's name of the first and second choice (If possible)</i></u></p>



National University Corporation

Shizuoka University

International Exchange Program 2023

●Designed for Exchange students from Partner Universities

●No Tuition Fee

●Various support, advising and cultural, leisure activities

●Dormitory near campus available



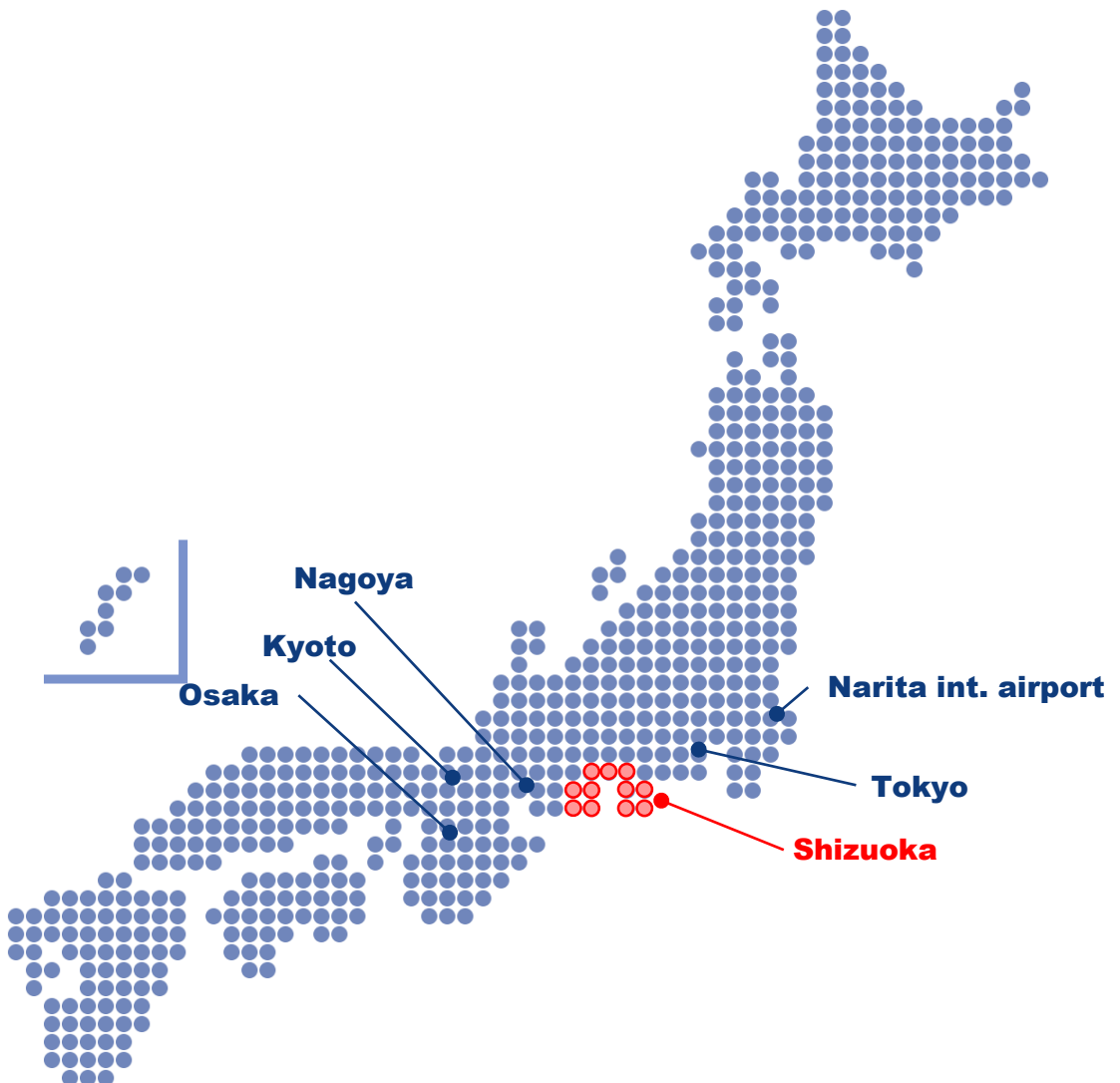
Location

●Access to Shizuoka

We are located in the heart of Japan !

/Easy to go anywhere !

/One hour to go Tokyo or Nagoya by Bullet Train (Shinkansen) !



Shizuoka University



- **National University, Japan**
- **More than 100 Partner Universities and Institutes around the world.**
- **Students: More than 10,000**



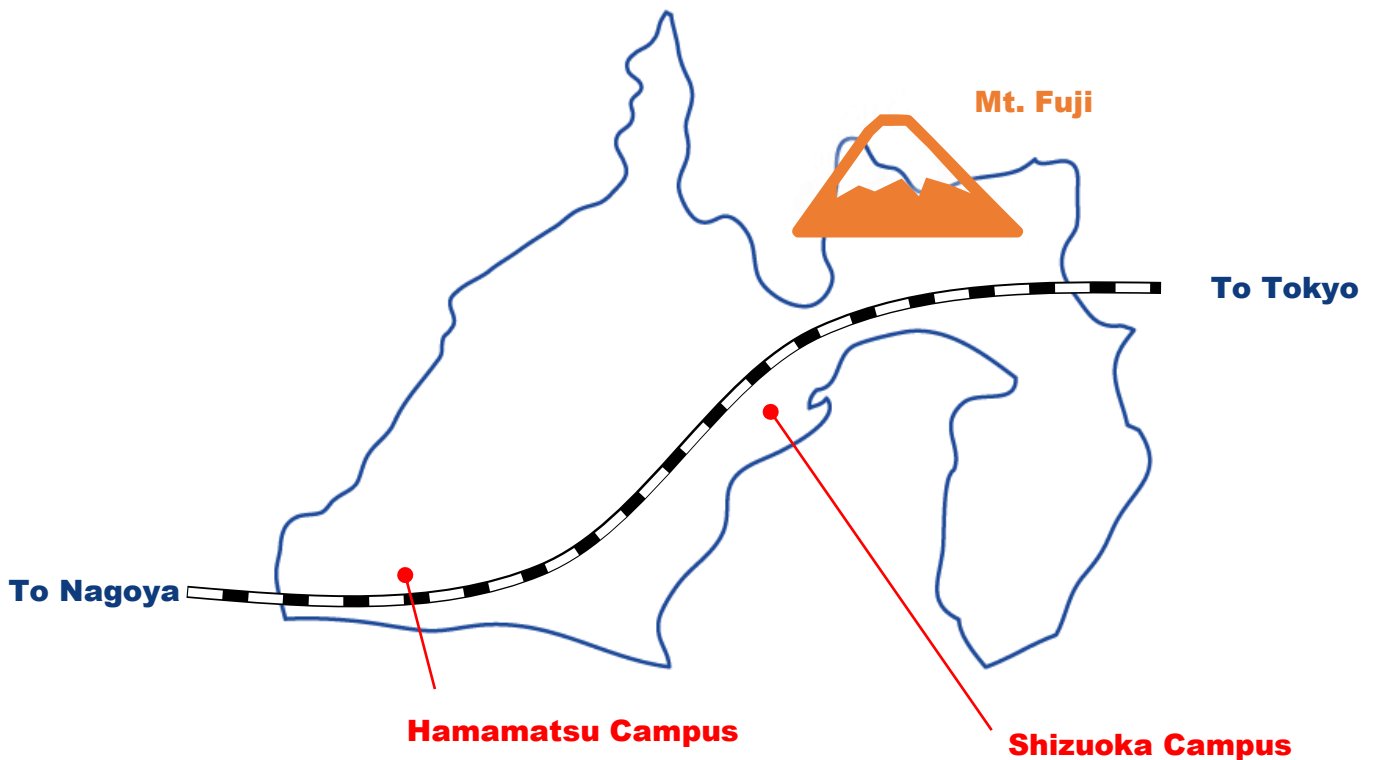
Shizuoka University

[Two Campuses]

- **Shizuoka Campus-**
Humanities and Social Sciences,
Education, Science, Agriculture



- **Hamamatsu Campus-**
Informatics, Engineering



Study at Shizuoka University

■ Alternative Schedule

- ☐ **April ~ September (1 semester)**
- ☐ **April ~ March (2 semesters)**
- ☐ **October ~ March (1 semester)**
- ☐ **October ~ September (2 semesters)**



■ Japanese Studies

Shizuoka University offers various types of Japanese studies for the international student:

- ① **Japanese Language Program**
- ② **Intensive Japanese Course (Beginning)**
- ③ **Intensive Japanese Course (Intermediate)**
- ④ **Japanese Studies & Exchange Program**
- ⑤ **General Education**

① Japanese Language Program



■ Japanese 1

- ☐ (Beginners) Basic Japanese **4 classes/week**

■ Japanese 2

- ☐ (Elementary) Elementary Japanese **3 classes/week**

■ Japanese 3

- ☐ (Lower-intermediate) **3 classes/week**
“Reading & Grammar”, “Listening & Vocabulary”,
“Writing & Speaking”

■ Japanese 4

- ☐ (Upper-intermediate) **3 classes/week**
“Reading & Grammar”, “Listening & Vocabulary”,
“Writing & Speaking”

■ Japanese 5

- ☐ (Advanced learners) **2 classes/week**
“Integrated Japanese”

***JP4 & JP5 are not offered in the Hamamatsu campus.**

***1 class is 2 hours × 15 weeks = 30 contact hours/semester**

***You can also attend classes of one level higher or lower than your level.**

(e.g. Japanese 3 student can attend JP2 and JP4 as well as JP3.)

***Academic credits are offered to the students who successfully completed the course.**

② Intensive Japanese Course (Beginning) at Shizuoka

Course for beginners

2 - 3 classes / day ⇒ 10 - 15 classes / week

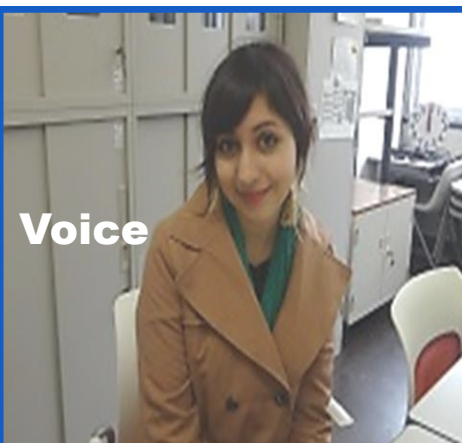
■ Subjects Offered

- ☐ **Beginning Japanese I (Basic Japanese)** **(10 classes/week)***
- ☐ **Beginning Japanese II (Kanji)** **(1class / week)****
- ☐ **Beginning Japanese III (Writing)** **(1class / week)****
- ☐ **Beginning Japanese IV (Listening)** **(1class / week)****
- ☐ **Beginning Japanese V (Conversation)** **(1class / week)****
- ☐ **Beginning Japanese VI (Japanese Language & Culture)** **(1class / week)****

*** : compulsory**

**** : optional**

■ Academic credits offered (10 - 15 credits in total)



Voice

I took the Japanese intensive course because I wanted to quickly improve my Japanese language skills. The course teachers were very helpful and I was able to learn so much about Japanese language and culture as well.

I enjoyed the program and recommend it to anyone wanting to improve his/her Japanese!

③ Intensive Japanese Course (Intermediate) at Hamamatsu

Course for upper intermediate learners

2 classes / day ⇒ 10 classes / week

■ Subjects Offered

- ☐ **Intermediate Japanese I · II · IV · V (Grammar & Vocabulary)**
(4 classes/week)
- ☐ **Intermediate Japanese III (Listening)**
(1class / week)
- ☐ **Intermediate Japanese IV (Conversation & Speech)**
(1class / week)
- ☐ **Intermediate Japanese VII · X (Writing Composition)**
(1class / week)
- ☐ **Intermediate Japanese VIII (Japanese for Science)**
(1class / week)
- ☐ **Intermediate Japanese IX (Reading)**
(1class / week)

■ Academic credits offered (20 credits in total)

日本語集中コースを受けた韓国人学生です。集中コースを受けた結果、私は短期間内に日本語能力を早く向上させることができました。単語、文法、読解、聴解等、日本語の基礎的な部分全部を具体的に勉強できたことが理由だと思っています。特に私は漢字の実力が上がりました。この授業は日本語能力を上げたい留学生には本当に役に立つ授業だと思っています。

I came from Korea and I took the intermediate intensive course. This course remarkably improved my Japanese proficiency in 4 months. I studied vocabularies, grammar and Kanji. I trained reading and writing skills in the course. That is why I'm an advanced Japanese learner and I'm good at Kanji now. I strongly recommend this useful course to all students who want to improve their Japanese in a short time.



④ Japanese Study & Exchange

■ Selective Classes for Exchange Students

■ To cultivate Students with fundamental knowledge in the Japanese language and Japanese affairs through lectures and seminars.

Program	Lecture/ Seminar	Class Hours	Credit
Introduction to the Study & Exchange Program in Japan	Lecture	4	2
Introduction to Japanese culture (twice a year)	Lecture	4	
Introduction to foreign cultures	Seminar	24	
International exchange activities	Seminar		
Japanese culture experiences	Seminar		
Final paper for the Study & Exchange Program in Japan	Lecture	6	
Presentation on the achievements through studying in Japan	Seminar	8	
Total		46	2

⑤ General Education

■ Advanced Japanese classes for undergraduate international Students as a part of the general education. It's open to exchange students.

- ☐ Japanese II・IV・VI (Fall term)
- ☐ Japanese I・III・V (Spring term)
- ☐ Japanese View(Spring in Hamamatsu, Fall in Shizuoka)

*1 class is 2 hours × 15 weeks = 30 contact hours/term

*The academic credits are offered to students who pass the examinations

Academic Studies

■ **Most of the academic courses are open to students.**

(1) Undergraduate Levels :

An advanced level of Japanese is required because most of the classes are offered in Japanese, but some of the introductory courses for General Education and several courses for International Japan Studies at the Faculty of Humanities and Social Sciences are offered in English.

(2) Graduate Levels :

Courses at the Department of Informatics, Science, Engineering and Agriculture are offered in English.

■ **Exchange students can take any subject from among all the faculties, though his/her faculty will be decided based on your study plan after our consideration.**



Recommended Study Plans

■ Exchange students are required to take more than 7 classes / week. The following plans are recommended to Japanese beginning students (①), Japanese intermediate students(②) and Japanese advanced students (③).

[1st term]

- ① 10 - 15 Japanese classes of the Intensive Course
- ② 5-6 Japanese classes + 1-2 academic class(es)
- ③ 2-3 Japanese classes + 4-5 academic classes
+ Japanese Study & Exchange Program

[2nd Term]

Less Japanese classes and more academic classes.



Life in Shizuoka Prefecture, Japan !

●Accomodations

We offer you a dormitory, “The International Residence” near the campus. Apartments are also available.

Campus	Type	Rooms	Area	Rent/Month
Shizuoka	Single	95	80m ² /5room	25,400yen
Hamamatsu	Single	95	80m ² /5room	24,700yen

One Unit is composed of 5 private rooms and shared common area. The common area includes dining kitchen, air conditioner, washing machine and dryer, wash room, shower/bath, toilet, Wi-Fi, storage room and shoe locker.



Life in Shizuoka Prefecture, Japan !

●Various Support

- Academic Advisor and Personal Tutor
- Counseling Service in English and health care services
- Activities, Field trips and so on

●Fees & Cost

- Tuition : Free
- National Health Insurance(NHI) & National Pension:
70% of medical expenses will be covered by NHI.
- GAKKENSAI, GAKKENBAI and GAKUBAI.
All our students must enroll in these students' insurances.
- Monthly cost : Accomodation, Food, etc.

TOTAL about ¥80,000-



●Funds

- Japanese Studies Student

(Japanese Government Scholarship)

☆undergraduate student (18 to 30 years old)

☆Majoring in fields related to the

Japanese language and/or Japanese culture

A few exchange students can get this.

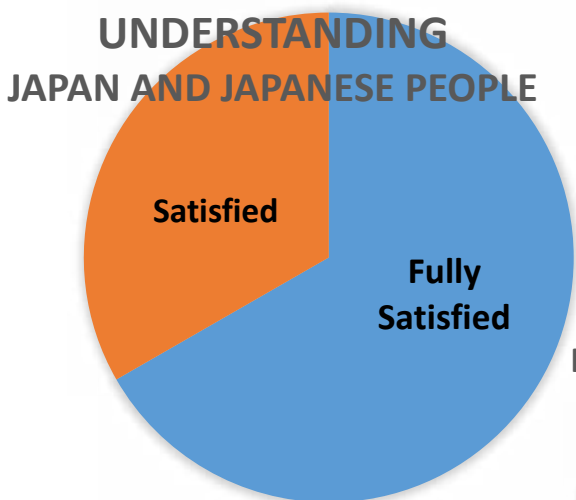
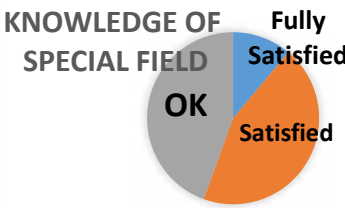
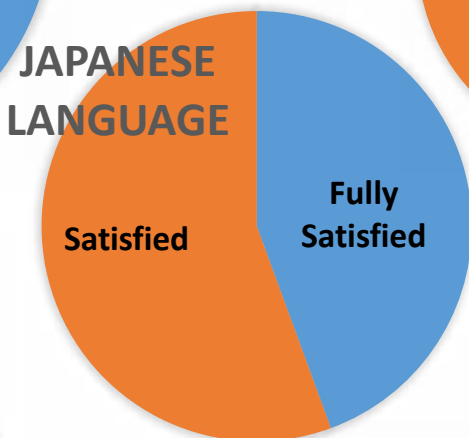
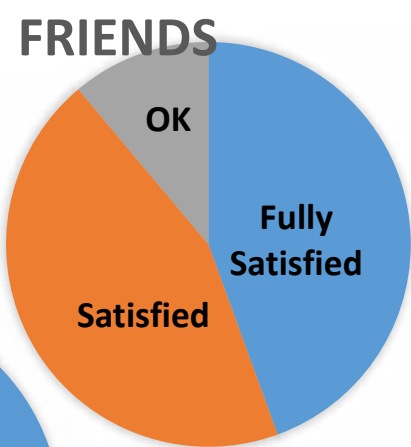
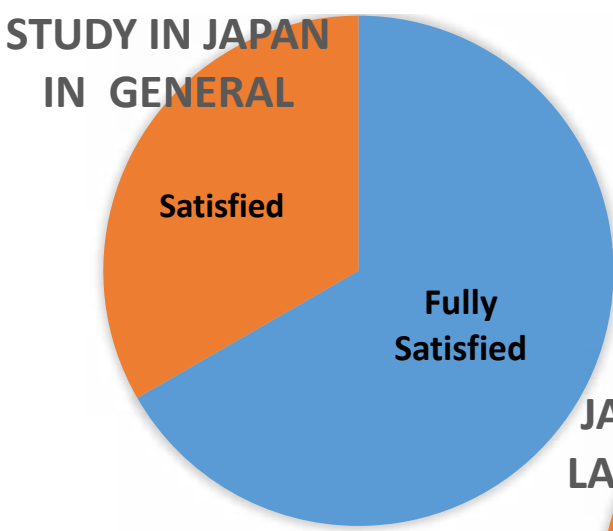
- Monthly Allowance: ¥117,000~¥119,000
- Tenure of Scholarship : 11 months

Please apply through your university.

Feedbacks from former participants

How do you evaluate your study in Shizuoka?

Result of Questionnaire Exchange Students and Japanese Language and Culture Students



Voices

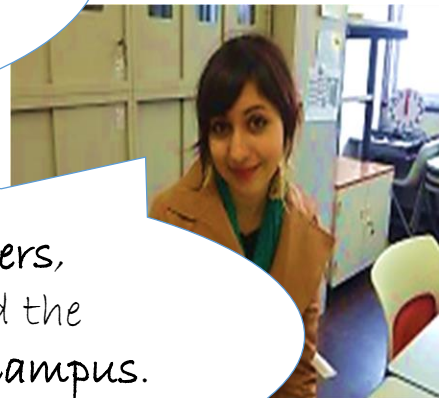
**Beautiful Mt. Fuji
and friendly
people here!**

(Catlea & Muthia, Indonesia)



**I'm glad I have met
Shizuoka University
in my life.**

(Sharmilee, India)



*The very helpful teachers,
friendly students and the
beautiful scenery on campus.*

(Christine, USA)



**I'm so happy joining
many circles such as
skate board, snow
board and so on!**

(Akemi, Brazil)



Application



● How to Apply

**Apply through your university's International Office.
Your application must arrive at Shizuoka University
by . . .**

**the middle October in 2023 for Spring Semester
(Apr. 2023)**

**the early March in 2023 for Fall Semester
(Oct. 2023)**

● Contact

**Organization for International Collaboration,
Shizuoka university**

**Address : 836 Ohya, Suruga-ku, Shizuoka-shi, Shizuoka-ken,
422-8529 JAPAN**

TEL : +81-54-238-4260

FAX : +81-54-238-5041

E-mail : inbound@adb.shizuoka.ac.jp

Website : <https://www.suoic.shizuoka.ac.jp>