

AUTUMN 2021

**A BRIEF OUTLINE OF THE PRACTICAL
IMPLICATIONS OF THE EDUCATIONAL SYSTEM ON**

CREDIT MOBILITY AT THE UNIVERSITY OF TWENTE



This document gives a brief overview of the educational system as it is used at the University of Twente and what it means for student mobility, in particular voor “course work”. This is *not* a manual on “how to apply”.

Target audience: members of staff of partner universities, involved in credit mobility.

AN ADDENDUM TO THE “UNIVERSITY OF TWENTE - INSTITUTIONAL DATA SHEET - 2022-2023 ”

CONTENT

1. Structure of the university	2
1.1. Organisation chart	2
1.2. Faculties	2
1.3. Academic calendar	3
1.4. Language of instruction	3
1.5. Structure of educational programmes	4
1.5.1. BSc programmes	4
1.5.2. MSc programmes	5
2. Credit mobility - courses	6
2.1. Inbound mobility	6
2.1.1. Bachelor level	6
2.1.2. Master level	7
2.1.3. Bachelor and Master level	7
2.2. Outbound mobility	8
2.2.1. Bachelor level	8
2.2.2. Master level	8
2.3. Inbound & outbound mobility	8
2.3.1. Flexibility	8
2.3.2. Organisation of student mobility	8
3. Practical information	9
3.1. References	9
3.2. Contact information	10

1. STRUCTURE OF THE UNIVERSITY

In order to understand the UT's educational system and its implications for student mobility (inbound and outbound), it is useful to know about the embedding of our educational programmes in the university structure.

1.1. ORGANISATION CHART

The university comprises of 5 faculties and 3 research institutes, which are interconnected like a matrix¹:

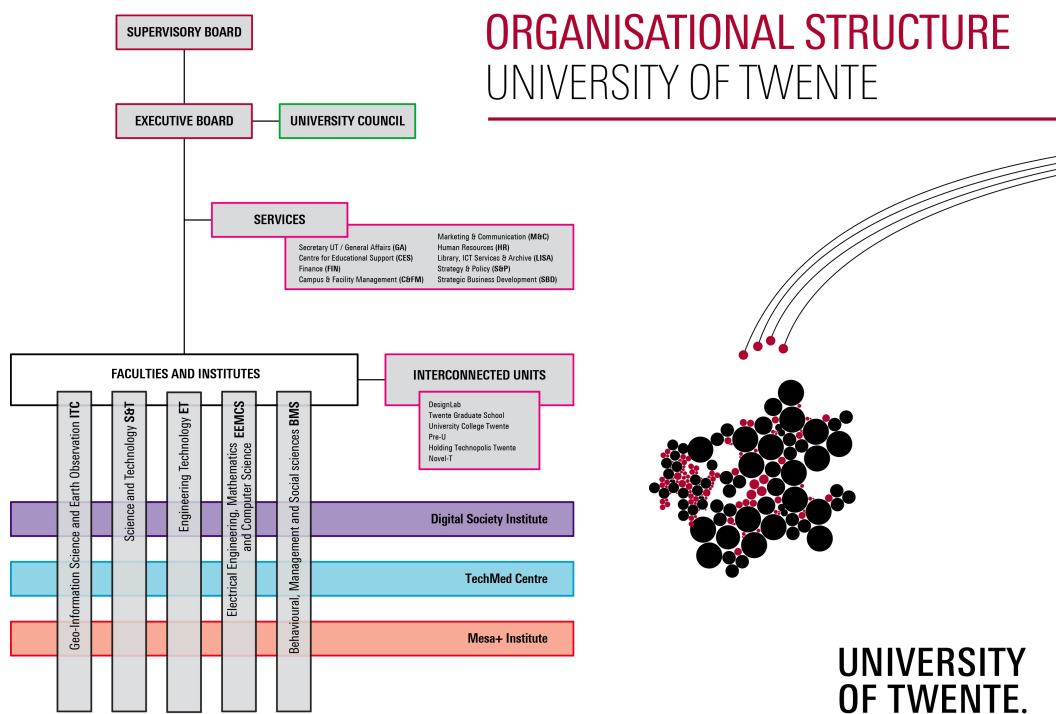


Figure 1: Organisational structure of the University of Twente

Members of staff of all faculties and research institutes are involved in the main scientific themes the UT will focus on in the coming years; please visit www.utwente.nl/en/research/themes/ for more information about these themes.

1.2. FACULTIES

Each of the five faculties is on the one hand divided into research units², on the other hand into educational programmes. In general there is no one-to-one relation between

¹ This organisation chart can be found at: www.utwente.nl/en/organisation/structure/#management

² In this context, a 'unit' could be 'chair', a 'group', a 'department', a 'laboratory', etc. Different naming is being used throughout the university.

a research unit and an educational programme. One research unit can offer educational activities to several educational programmes, even across faculties (modules, courses, lectures, thesis supervision, ...). Every educational programme can be linked to multiple research units, even across faculties.

For more information about the faculties, please visit www.utwente.nl/en/organisation/structure/faculties/ and follow the links to the home pages per faculty.

Each faculty has one point of contact for matters regarding credit mobility, which is the **Exchange Coordinator** of that faculty. For an overview of the Exchange Coordinators, please visit www.utwente.nl/en/education/exchange-students/departmental-exchange-coordinators/.

1.3. ACADEMIC CALENDAR

At the UT we work with blocks, whereby two blocks compose one semester. The academic calendar the UT uses, therefor looks like:

	Block	Nominal study load (#ECTS credits)	Time period (incl. Introduction week, excl. resits)
1 st / Fall semester	1A	15	Mid Aug-Nov
	1B	15	Nov-Feb
2 nd / Spring semester	2A	15	Feb-Apr
	2B	15	Apr-Jul
Summer	3	var.	var. (Jul-Aug)

Table 1: overview of academic calendar

The regular programme is taught in 1st and 2nd semester only. The 3rd semester is only used occasionally for regular education, but quite often for re-sits of block 2B(!). More details about the academic calendar can be found at www.utwente.nl/en/ces/planning-schedules/academic-calendar/.

1.4. LANGUAGE OF INSTRUCTION

The facilitation of student mobility was, quite some years ago, one of the reasons to change the language of instruction to English for most of the educational programmes³. Even if an educational programme is mainly in Dutch, it might have some English taught components. In the [course catalogue](#) the language of instruction of any module or course is given.

³ Educational programmes which are NOT taught in English, are the following MSc programmes: Riskmanagement and Technical Medicine, and the following BSc programmes: Applied Physics, Biomedical Engineering, Health Sciences, Technical Medicine.

1.5. STRUCTURE OF EDUCATIONAL PROGRAMMES

1.5.1. BSC PROGRAMMES

All bachelor's programmes have a curriculum of three years⁴. The default curriculum⁵ is built up as follows:

	block 1A	block 1B	block 2A	block 2B
Year 1	Module 1	Module 2	Module 3	Module 4
Year 2	Module 5	Module 6	Module 7	Module 8
Year 3	Module 9	Module 10	Module 11	Module 12 (thesis)

Table 2: overview of BSc curriculum

What is a module?

The modules are built according to the principles of the so-called Twente Education Model⁶. The core of a module is a project. The students work in groups on the project assignment. The knowledge the students need in order to successfully do this project assignment, is offered in the accompanying courses ('module-parts'). Within each of the courses, the same groups might work on smaller assignments (but also different groups might be created).

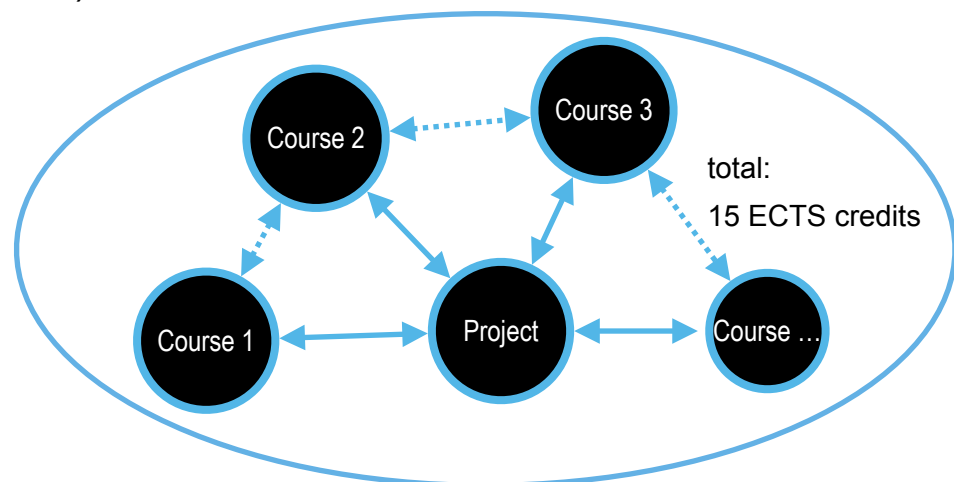


Figure 2: Schematic representation of a module

Per module the number of module-parts vary, as well as the number of ECTS credits used for the project. The total number of ECTS credits for a module is always 15. It is therefor obvious that per block a student can participate in one module only.

⁴ With the exception of Technical Medicine, which is four years.

⁵ There might be some exceptions to this rule. The Exchange Coordinator of the concerned faculty could give more information.

⁶ For more information about the Twente Education Model, please visit www.utwente.nl/en/tom/

Module 1-8, 11 & 12 are part of the regular, fixed curriculum of the bachelor's programme. In general the students have no elective space within these modules. For the specifics of those modules, please visit the home page of the educational programme. Unfortunately, there is not one website listing all curricula of all educational programmes; please visit the faculty home page, go to the Education sub-page and subsequently choose the educational programme you are interested in. Somewhere in the menu there will be a link to the curriculum of that programme.

Module 9+10 is what we call the *minor space* or *minor programme*. In that semester the student can select a different subject than the core of their bachelor's programme. They are free to choose for a deepening of their regular programme (you could say, choose a specialisation of a subject within the general bachelor's curriculum) or something completely different. For instance, an engineering student could choose to learn a language and culture, or select a semester of management courses, or ... Most of the educational programmes are rather flexible in the approval of their student's wishes.

1.5.2. MSC PROGRAMMES

All master's programmes have a curriculum of one or two years⁷. The default curriculum⁸ is built up as follows:

	block 1A	block 1B	block 2A	block 2B
Year 1	set 1	set 2	set 3	thesis

Table 3: overview of 1-year MSc curriculum

	block 1A	block 1B	block 2A	block 2B
Year 1	set 1	set 2	set 3	set 4
Year 2	internship / set 5	thesis	thesis	thesis

Table 4: overview of 2-year MSc curriculum

In the Master's programmes the students have to compose a packet of **courses**, which is called their *exam programme*. Most educational programmes offer different specialisations to choose from, and each specialisation will have different requirements with regard to this exam programme. Some specialisations require the student to select one set of courses only, other specialisations give the student the opportunity to choose from many different core courses and elective courses. The vast majority of MSc courses are equivalent to 5 ECTS credits. Therefore, a maximum of 3 courses can be chosen per block:

⁷ With the exception of Technical Medicine, which is three years.

⁸ There might be some exceptions to this rule. The Exchange Coordinator of the concerned faculty could give more information.

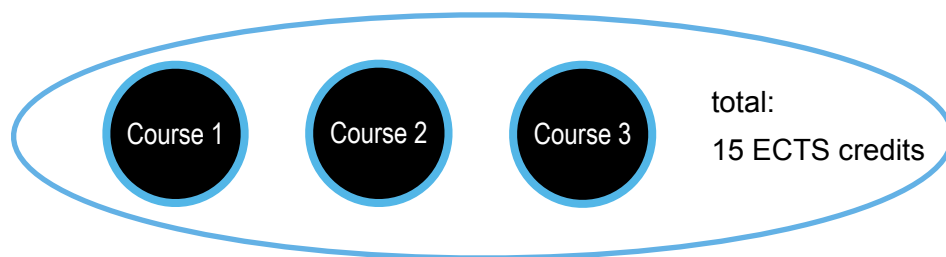


Figure 3: Schematic representation of an arbitrary block of courses (MSc curriculum)

2. CREDIT MOBILITY - COURSES

The style of education taught at any institution influences the practical side of credit mobility. Please find below the characteristics of our exchange programmes.

2.1. INBOUND MOBILITY

The University of Twente does not offer courses explicitly taught for inbound exchange students, they participate in the same modules and courses which are attended by the regular students.

For various reasons, however, not *all* modules and courses are offered to inbound students. Therefore it is strongly recommended to refer your students to the **Entrance Portal** for inbound students: www.utwente.nl/en/education/exchange-students/.

2.1.1. BACHELOR LEVEL

- Inherent to the structure of our bachelor programmes (see [section 1.5.1](#)), the choice on bachelor level is limited. All available modules are mentioned in the Entrance Portal.
- In addition to the modules of the regular programme, the University of Twente is offering a selection of **interdisciplinary modules**, the so-called *HTHT-minors*⁹. These modules are in general not part of the curriculum of a regular programme, but they can be chosen by regular students for their minor programme. These interdisciplinary modules are also highly recommended for inbound exchange students. The list of modules can also be found via the Entrance Portal.
- Because most of the bachelor programmes are taught in English, bachelor students are supposed to select bachelor modules. Possible exceptions to this rule are mentioned in the Entrance Portal.

⁹ **High Tech Human Touch** modules. For more information, see www.utwente.nl/en/education/electives/minor/offer/htht-minors/.

- Because of the structure of our modules (see [section 1.5.1](#)), students can only choose *complete modules* and not parts of modules. However, if at the end they fail certain parts of a module, the Transcript of Records will reflect their efforts and any module-part which is successfully finished (i.e with a sufficient mark) will be shown on it including the equivalent number of ECTS credits.

2.1.2. MASTER LEVEL

- Inherent to the structure of our master programmes, the number of master courses to select from is huge. At the time of application, it cannot be checked if lectures from one course overlap with the lectures of another course¹⁰. It is not always easy to find a neat set of courses in the area of a certain specialisation of a certain master's programme. Therefor the Exchange Coordinators have created so-called **Exchange Study (or Course) Packages (ESP)**. Such ESP contains a coherent set of courses in one of the specialisations of an MSc programme, whereby changes on overlap in lectures are the lowest. All available ESPs can be found in the Entrance Portal.

2.1.3. BACHELOR AND MASTER LEVEL

- Acceptance to any module/course always depends on the match between the pre-requisites of the module/course and the background of the student.
- It is allowed to choose modules or courses of other educational programmes which are not included in the exchange agreement. However, this is limited to a maximum of 1 module (BSc) or 2 courses (MSc) per semester only. Acceptance, however, not only depends on the course-specific pre-requisites but also on the regulations of the exam committee of the concerned educational programme. Assessment of applications including courses at different faculties will therefore take more time. In general it is not advisable to choose courses from different programmes, due to an increasing chance on overlap in lectures.
- In general each course offers one re-sit possibility. Re-sits of written exams are quite often in the weeks after the semester in which the course takes place! The student might have to keep this in mind. The examination weeks can all be found in the academic calendar (www.utwente.nl/en/ces/planning-schedules/academic-calendar/).
- All educational programmes aim to offer at least some 'on site' education, if possible. Therefore the UT does not offer purely online programmes.

¹⁰ Schedules are published about four weeks before the start of a block. See also www.utwente.nl/en/ces/planning-schedules/frequently-asked-questions/

2.2. OUTBOUND MOBILITY

2.2.1. BACHELOR LEVEL

Inherent to the structure of our bachelor programmes (see [section 1.5.1](#)), our outbound bachelor students are quite free in their choice of minor subject. This is why we may ask you to add certain educational programmes from your side to the agreement, such that our students can indeed choose a 'minor subject' different from their 'major subject'. Obviously, our students will have to comply with any rules your institution has in this respect, as well as comply with the pre-requisites of any course.

2.2.2. MASTER LEVEL

Inherent to the structure of our master programmes, our outbound MSc students are in general rather limited in their choice of courses. Their Programme Coordinator will have to approve their courses as part of their exam programme (see also [section 1.5.2](#)). This might create a bit more communication to and fro between the concerned student and you or one of your (teaching) colleagues, in order for the student to find his/her optimal set of courses.

2.3. INBOUND & OUTBOUND MOBILITY

2.3.1. FLEXIBILITY

To provide maximum flexibility for inbound and outbound mobility, we are quite interested in setting up *institution wide agreements*. However, we realise that this will not always be possible or practical, due to differences in exchange programmes on both sides or in organisational structures. The faculties of EEMCS (Electrical Engineering, Mathematics and Computer Science), ET (Engineering Technology) and S&T (Science and Technology) in particular are generally in favour of *faculty wide agreements*.

2.3.2. ORGANISATION OF STUDENT MOBILITY

At the UT, the organisation of student mobility is both centralised and de-centralised. The following functionaries are involved:

- Faculty staff member: *faculty or Departmental Exchange Coordinator (ECO)*
 - contact person for students: student (inbound and outbound) support involving the content of the exchange programmes (courses, learning agreement);
 - approval of Learning Agreements (inbound);
 - contact point for partner institutions: to discuss the content of bilateral agreements (which study areas, how many students, etc.).

- CES¹¹ staff member: *Exchange Officer*
 - contact person for students: student (inbound) support involving practical matters;
 - responsible for the formal and administrative aspects of the inbound exchange procedure.
- IRP¹² staff member: *Agreement Administrator*
 - responsible for the formal and administrative aspects of setting up bilateral agreements;
 - contact person for partner institutions: agreements with more than one faculty, nominations matters.
- IRP staff member: *Institutional Erasmus Coordinator*
 - contact person for partner institutions: information about the Erasmus+ programme or regarding current Erasmus+ projects.

3. PRACTICAL INFORMATION

3.1. REFERENCES

- **Portal for inbound students: www.utwente.nl/en/education/exchange-students/**

This portal contains information about *among others*:

 - our educational system
 - Dutch grading system and grading tables per programme
 - explanation about our exchange offer
 - deadlines
- online brochure "Student exchange opportunities"
- list of Departmental or Faculty Exchange Coordinators (ECOs)
- Institutional data sheet
- Scholarship Office and International relations & Partnerships

Other websites already mentioned in the text:

- organisation chart: www.utwente.nl/en/organisation/structure/#management
- UT main research themes: www.utwente.nl/en/research/themes/
- list of faculties: www.utwente.nl/en/organisation/structure/faculties/
- academic calendar: www.utwente.nl/en/ces/planning-schedules/academic-calendar/, www.utwente.nl/en/ces/planning-schedules/frequently-asked-questions/

¹¹ Centre of Educational Support (www.utwente.nl/en/ces/), one of the central UT service departments

¹² International Relations and Partnerships (www.utwente.nl/en/ces/soir/international-relations-partnerships/)

- Course catalogue
- Twente Education Model: www.utwente.nl/en/tom/
- High Tech Human Touch modules: www.utwente.nl/en/education/electives/minor/offer/htht-minors/

3.2.CONTACT INFORMATION

For any questions about the *content* of this document, please contact Dorien van de Belt (people.utwente.nl/d.vandebelt).